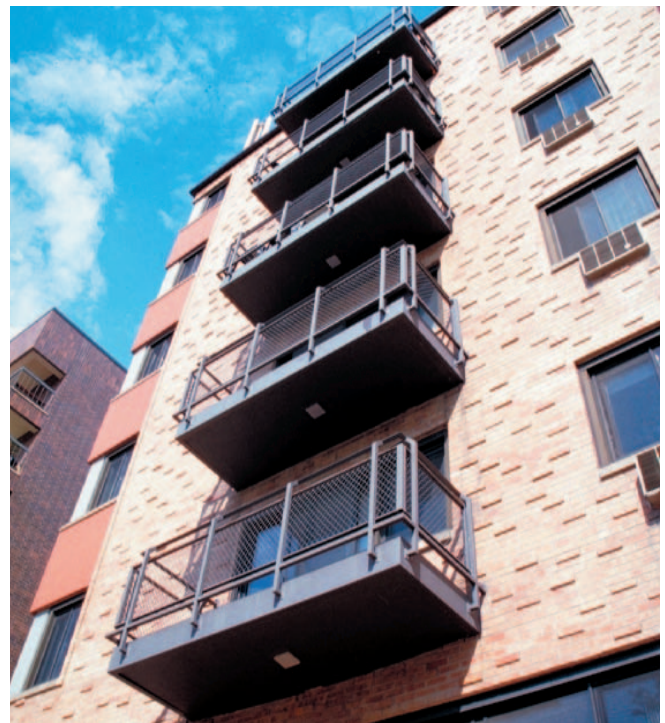




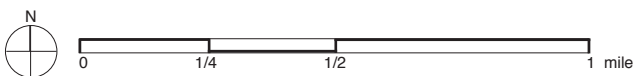
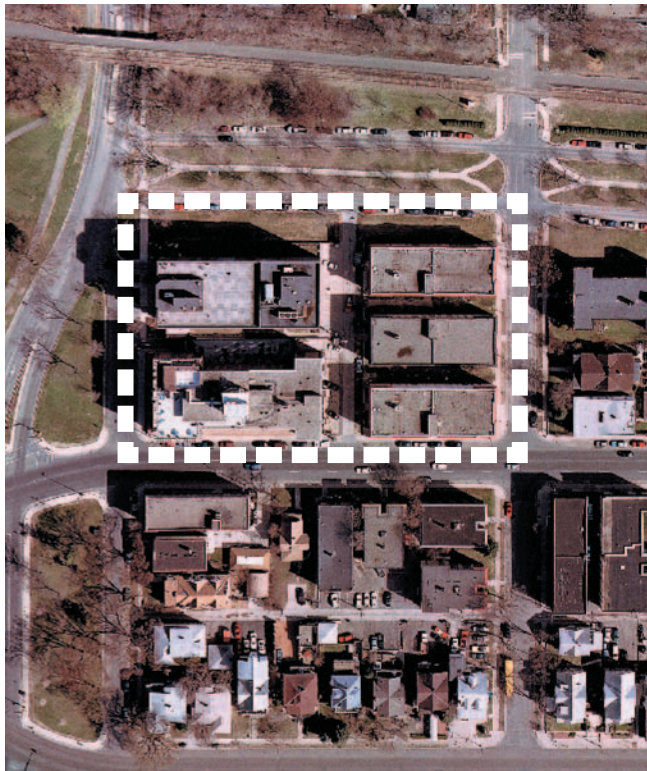
The densely populated Uptown area in south Minneapolis accommodates a variety of housing types, from single-family, detached homes, to duplexes, and low- to mid-rise apartments. The photo in the upper right is across the street from the study block.



Most of the older apartment buildings in Uptown have on-street parking, with limited rear-alley parking. The newer, mid-rise apartment buildings—pictured above and right—have underground parking for their greater number of residents.



The newer, mid-rise apartment buildings provide open space in the form of balconies, rooftop decks, and small, enclosed lawns that are elevated from the street. The older apartment buildings have small, shared yards. The entire Uptown area has easy access to recreational space, commercial areas, entertainment, and transit.



Block Area & Demographic Information

* U.S. Census demographic information (2000) covers entire census block, indicated on photo at left

- block density** 110 du/acre
- number of housing units** 231 *
- block area** 2.1 acres
- occupied housing units** 98% *
- housing units owner-occupied** 23% *
- average household size** 1.22 *
- percent white** 91% *
- median age** 31 *
- type of units** low-, and mid-rise apartments and condominiums
- number of floors** 4-9
- distance from curb** 14-45 feet

location Bounded by Lagoon Avenue, Knox Avenue The Mall, and James Avenue. East Isles neighborhood, Minneapolis.

Census Tract & Demographic Information

* U.S. Census demographic information (2000) covers entire census tract, which extends outside the boundaries of the map at left

- census tract density** 12 du/acre
- Census tract area on which density is calculated includes roads, open space, commercial, industrial, and other land uses, in addition to housing. Tract densities are almost always lower than block area densities.
- number of housing units** 2,018 *
- census tract area** 169 acres
- median household income** \$44,938 *
 - 118% of Minneapolis median household income
 - 83% of metropolitan median household income

context A block of low- to mid-rise apartment buildings within a neighborhood of apartments, duplexes, other multifamily, and single-family homes. The neighborhood also has numerous commercial, retail, office, and entertainment activities.