



Franklyn Park Apartments provides affordable housing for seniors. The four-story brick building is surrounded by a well-tended landscape.



An intimate courtyard provides a protected oasis for Franklyn Park residents.



Neighborhood assets located near Franklyn Park Apartments include a community center and library.

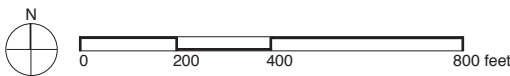
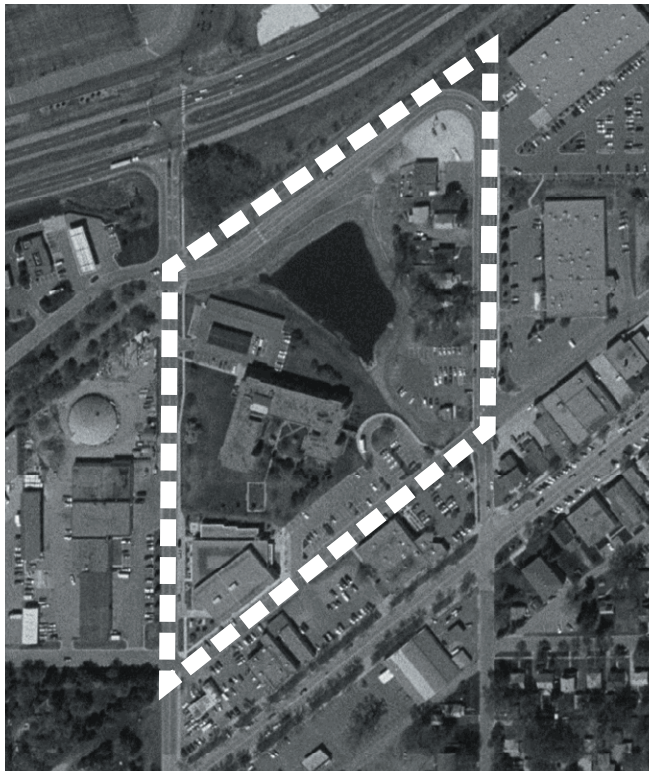


A nearby pond helps control stormwater runoff and adds green space.



Large windows allow fresh air and light into the units. Some residents use the mini-balconies as a place for container gardening.





### Block Area & Demographic Information

\* U.S. Census demographic information (2000) for census block indicated on photo at left.

\*\* Block area was calculated using a census block layer that was aligned to street centerlines by The Lawrence Group.

**block density** 10 dwelling units/acre

**number of housing units** 121 \*

**block area** 11.7 acres \*\*

**occupied housing units** 100% \*

**housing units owner-occupied** 3.3% \*

**average household size** 1.1 \*

**percent white** 100% \*

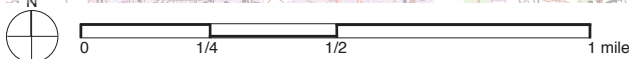
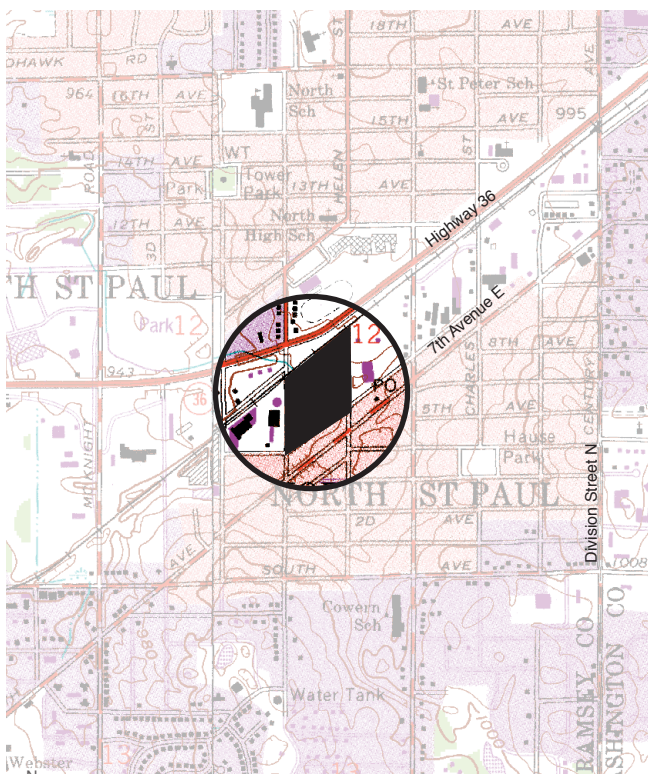
**median age** 78.5 \*

**types of units** apartments

**number of floors** 4

**location** Bounded by Centennial Drive, Helen Street North, Seppala Boulevard, and 1st Street North.

Scale of this orthophoto is different than most of the orthophotos in this housing density sheet series.



### Census Tract & Demographic Information

\*\*\* The U.S. Census demographic information (2000) included here refers to the entire census tract, which extends beyond the boundaries of the map at left.

**census tract density** 2.2 dwelling units/acre

Census tract area on which density is calculated includes roads, open space, commercial, industrial, and other land uses, in addition to housing. Tract densities are almost always lower than block area densities.

**number of housing units** 939 \*\*\*

**census tract land area** 425 acres \*\*\*

**median household income** \$41,597 \*\*\*

**context** Located near the main downtown commercial area of North St. Paul, this block features affordable senior housing, a pond, and a library and community building.