



East Village is a mixed-use development that provides a variety of housing choices for a variety of income levels in a compact, urban neighborhood on the edge of downtown.



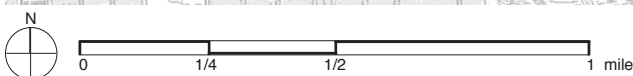
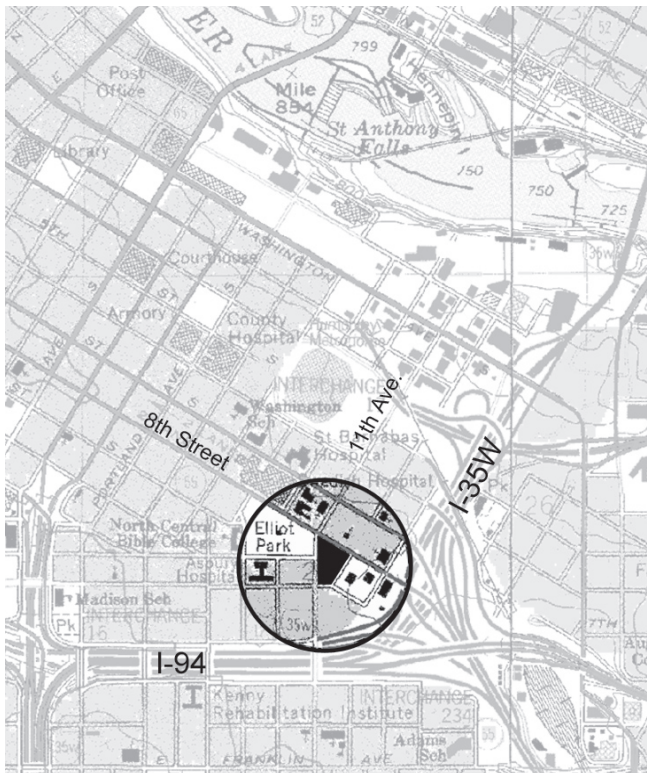
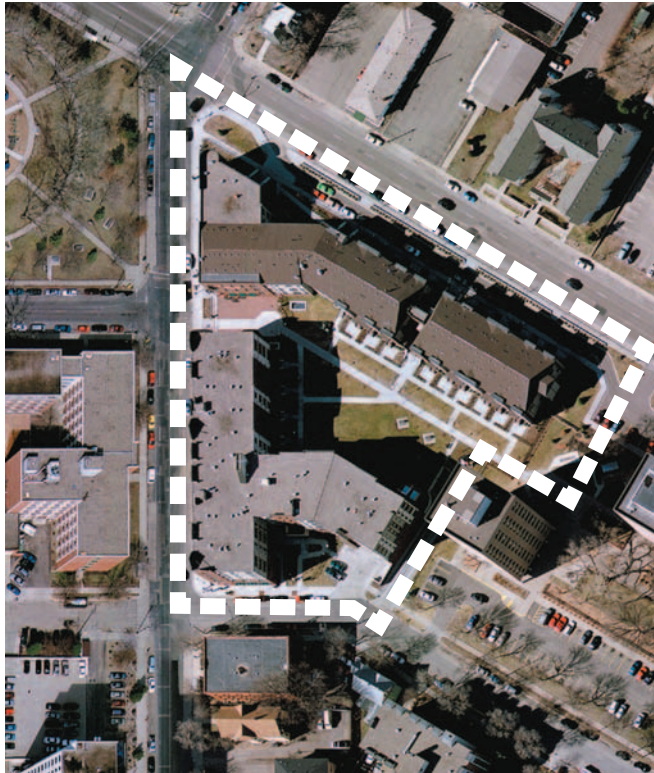
The mix of apartments and retail in East Village creates a strong, lively street edge that has revitalized its Elliot park neighborhood.



In addition to apartments, East Village has stacked rowhouses, in which apartments, or flats, are placed over individual rowhouses or townhouses.



The street-level houses of East Village's stacked rowhouse units have small porches that open onto fenced patios. They provide clearly defined private space along the street, and within a communal interior landscaped courtyard.



Block Area & Demographic Information

U.S. Census demographic information (2000) is not available for East Village, which was developed after 2000. Housing units and block area were calculated manually.

block density 62 du/acre

number of housing units 180

block area 2.9 acres

type of units low-rise apartments and stacked rowhouses

number of floors 3-4

distance from curb 15 feet

location Bounded by 11th and 12th Avenues, and 8th and 9th Streets South. Elliot Park neighborhood. Minneapolis.

Census Tract & Demographic Information

U.S. Census demographic information (2000) is not available for East Village, which was completed after 2000.

context New multifamily, mixed-use, market-rate and affordable housing built in the historic Elliot Park neighborhood on the edge of downtown Minneapolis. East Village contains low-rise apartments and stacked rowhouses that front the street and form an internal courtyard on the site. Wedged between the Minneapolis Convention Center and the I-94 freeway, Elliot Park has suffered from being somewhat cut off from the rest of the city. East Village and other new developments and redevelopments are serving to revitalize and reconnect this once-isolated community.