

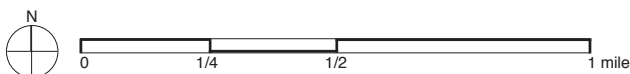
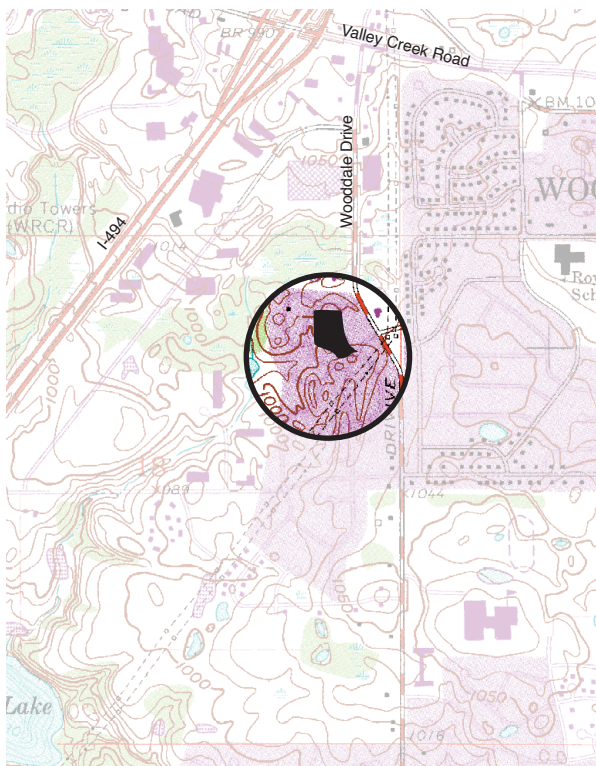
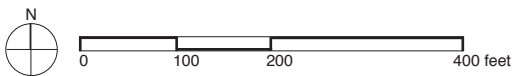
Woodlane Place Townhomes are rental townhomes in eastern Woodbury.



The townhomes are wrapped around a common area that includes play space and a swimming pool. Paths wind through the well-maintained landscape.



Garages include architectural details such as distinctive roof lines and high quality materials.



Block Area & Demographic Information

* U.S. Census demographic information (2000) for census block indicated on photo at left.

** Block area was calculated using a census block layer that was aligned to street centerlines by The Lawrence Group.

block density 8 dwelling units/acre

number of housing units 45 *

block area 5.3 acres **

occupied housing units 95.6% *

housing units owner-occupied 0% *

average household size 2.26 *

percent white 86.0% *

median age 26.7 *

types of units townhomes

number of floors 2

location Bounded by Cypress Drive, Cochrane Drive, and Sycamore Trail.

Census Tract & Demographic Information

*** The U.S. Census demographic information (2000) included here refers to the entire census tract, which extends beyond the boundaries of the map at left.

census tract density 1.8 dwelling units/acre

Census tract area on which density is calculated includes roads, open space, commercial, industrial, and other land uses in addition to housing. Tract densities are almost always lower than block area densities.

number of housing units 2,060 ***

census tract land area 1,125 acres ***

median household income \$54,316 ***

context Set in the Twin Cities suburb of Woodbury, this block is part of a bigger townhome development.