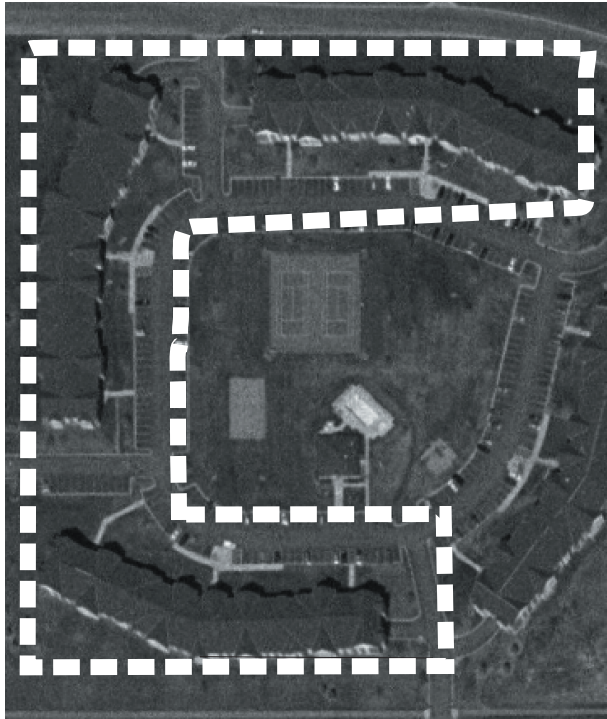




Valley Creek Apartments is a large rental apartment complex. Balconies, brick finishes, and multi-gabled roofs minimize the scale of the 3-story building. Both below-grade and surface parking are provided.



The large size of this residential complex allows it to provide amenities such as a swimming pool, clubhouse, large playground, and tennis courts.



Block Area & Demographic Information

Note: U.S. Census information from three census blocks that are part of one development were combined for this density sheet.

* U.S. Census demographic information (2000) for the three census blocks indicated on photo at left.

** Block area for the combined three census blocks was calculated using a census block layer that was aligned to street centerlines by The Lawrence Group.

block density 21 dwelling units/acre

number of housing units 222 *

block area 10.5 acres **

occupied housing units 87.4% *

housing units owner-occupied 0% *

average household size 1.9, 1.8, 1.9 *

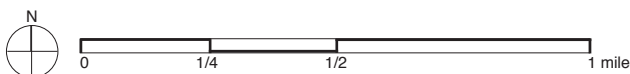
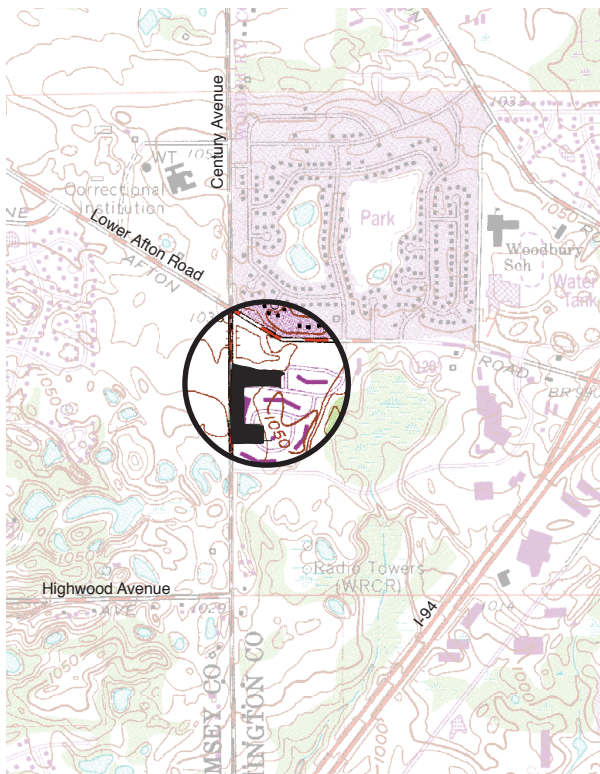
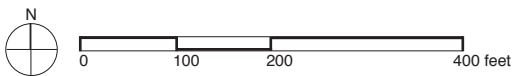
percent white 81.4% *

median age 29.0, 27.3, 27.3 *

types of units low-rise apartment

number of floors 3

location Bounded by Parkwood Drive, Century Circle, Pouliot Parkway, and Century Avenue South.



Census Tract & Demographic Information

*** The U.S. Census demographic information (2000) included here refers to the entire census tract, which extends beyond the boundaries of the map at left.

census tract density 1.5 dwelling units/acre

Census tract area on which density is calculated includes roads, open space, commercial, industrial, and other land uses in addition to housing. Tract densities are almost always lower than block area densities.

number of housing units 1,998 ***

census tract land area 1,290 acres ***

median household income \$51,913 ***

context Located in a fast developing area of Woodbury, these apartments are close to significant commercial and industrial areas.