



The apartments in this part of Woodbury Park feature front entrances that open onto landscaped courtyards.



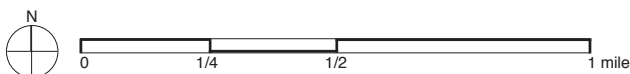
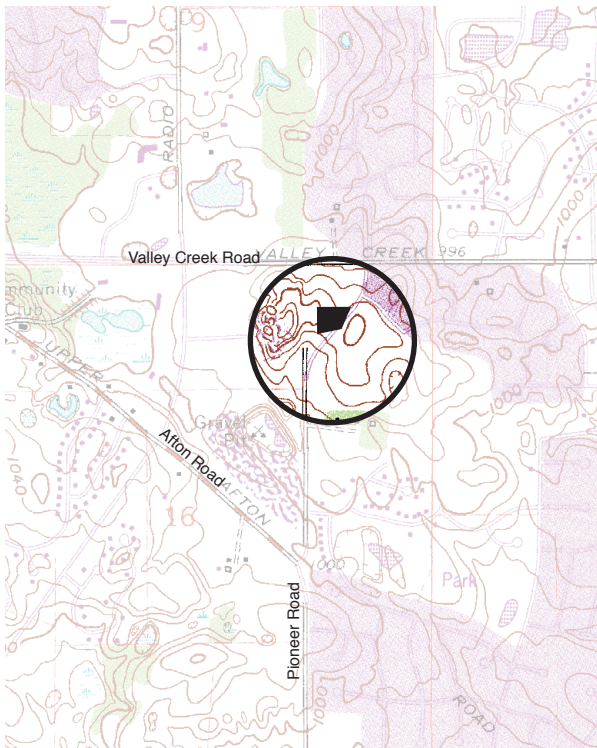
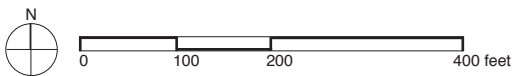
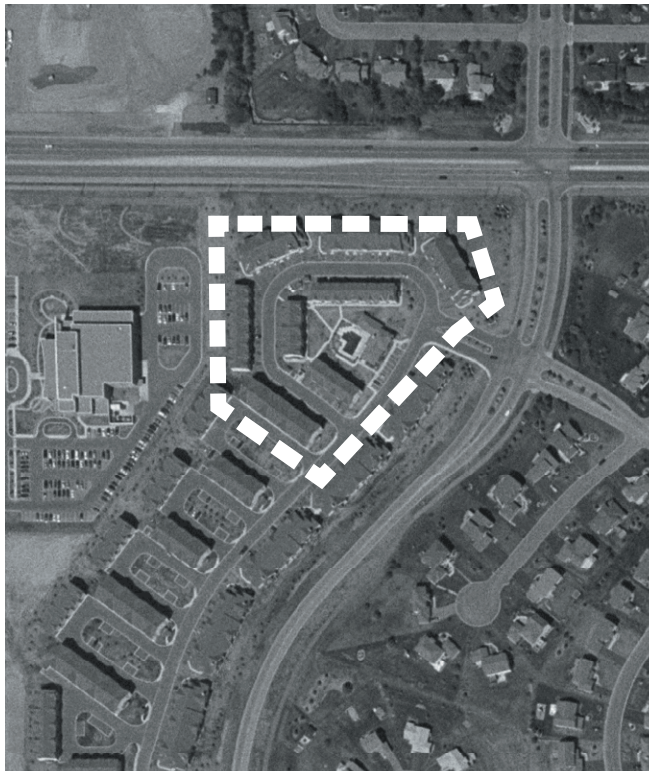
Within the same development but outside the featured census block, an automobile court provides surface parking for residents and guests and access to tuck-under garages.



Landscaped areas are well maintained.



In an area adjacent to the featured census block, two-story housing lines the edge of the development.



Block Area & Demographic Information

* U.S. Census demographic information (2000) for census block indicated on photo at left.

** Block area was calculated using a census block layer that was aligned to street centerlines by The Lawrence Group.

block density 11 dwelling units/acre

number of housing units 20 (U.S. Census data is incorrect. Information provided by property management staff.)

block area 1.9 acres **

occupied housing units 96.2% *

housing units owner-occupied 0% *

average household size 2.7 *

percent white 84.0% *

median age 27.2 *

types of units rowhouses

number of floors 3

location Bounded by Interlachen Parkway, Promenade Lane, and Vining Drive.

Census Tract & Demographic Information

*** The U.S. Census demographic information (2000) included here refers to the entire census tract, which extends beyond the boundaries of the map at left.

census tract density 1.9 dwelling units/acre

Census tract area on which density is calculated includes roads, open space, commercial, industrial, and other land uses in addition to housing. Tract densities are almost always lower than block area densities.

number of housing units 2,118 ***

census tract land area 1,117 acres ***

median household income \$83,530 ***

context This development is near many commercial and civic facilities.