



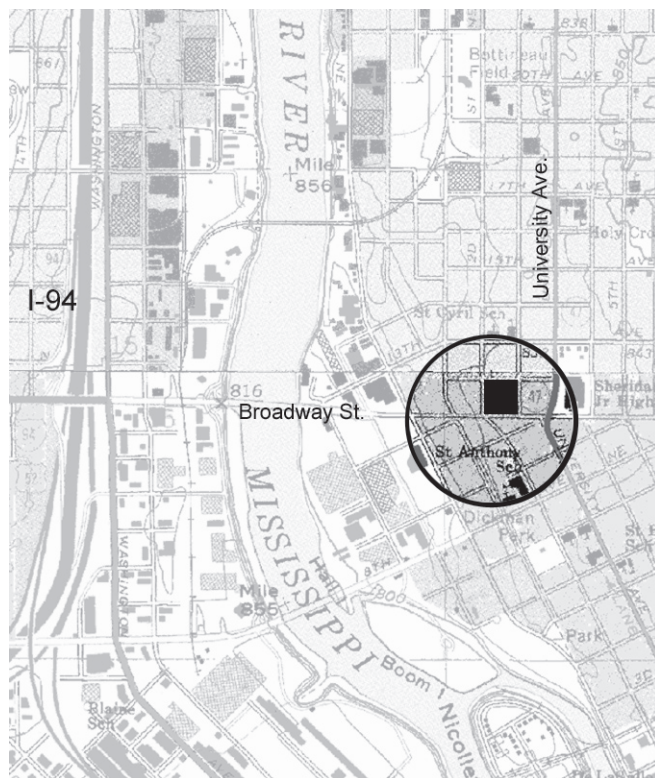
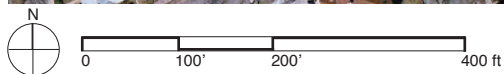
Stonehouse Square Apartments are located in a converted convent in northeast Minneapolis. The redevelopment of this building into affordable housing kept an attractive neighborhood landmark active within the community.



The historic character of the original building gives these new apartments many unique features.



The fence in front of the building clearly defines the sidewalk edge, but also allows in views, creating a comfortable space for pedestrians.



Block Area & Demographic Information

Due to an error in the census that placed the data for Stonehouse Square in the adjacent census block and tract—to the south of Broadway St. NE—these data cannot reliably be used, at either the block or tract level. Housing units, block area, and density listed below were calculated manually.

block density 40 du/acre

number of housing units 79

block area 2 acres

type of units low-rise apartments, duplex

number of floors 4

distance from curb 6-50 feet

location Bounded by Broadway St. and 2nd & 3rd Streets NE and 12th Avenue NE. Sheridan neighborhood, Minneapolis.

context Located along a commercial corridor (Broadway Street NE), in a residential neighborhood populated primarily with single-family, detached homes. NE Minneapolis, where Stonehouse Square is located, was traditionally home to immigrant and working-class communities, and remains one of Minneapolis' more affordable neighborhoods.