

Housing Density Shingle Creek Commons • 27 ^{units}/_{acre}



Shingle Creek Commons, affordable housing for seniors, is housed in a building that looks like a typical, traditional-style, low-rise apartment building. The main facade is close to the street and sidewalk, and creates a comfortable pedestrian space along the Humboldt Greenway. It is with attractive, durable brick, which should weather and maintain its appearance well over time.

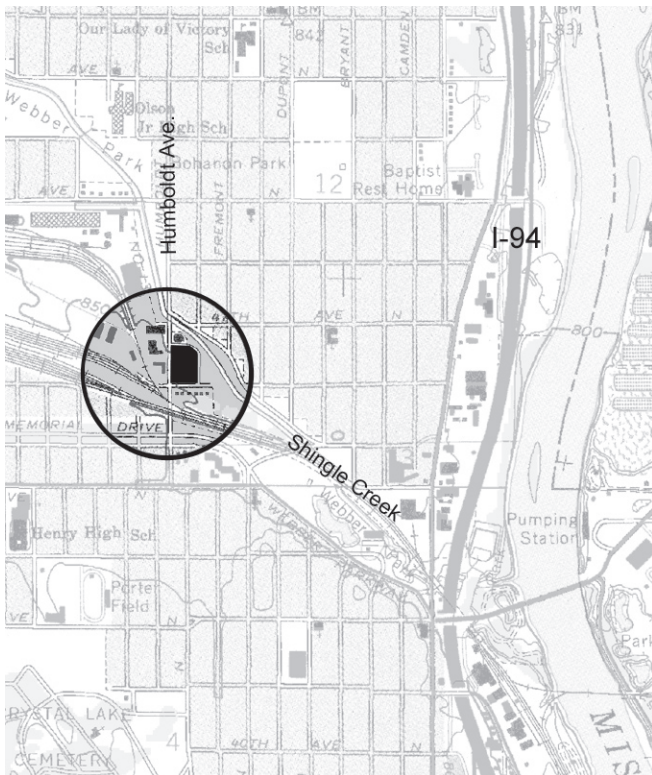
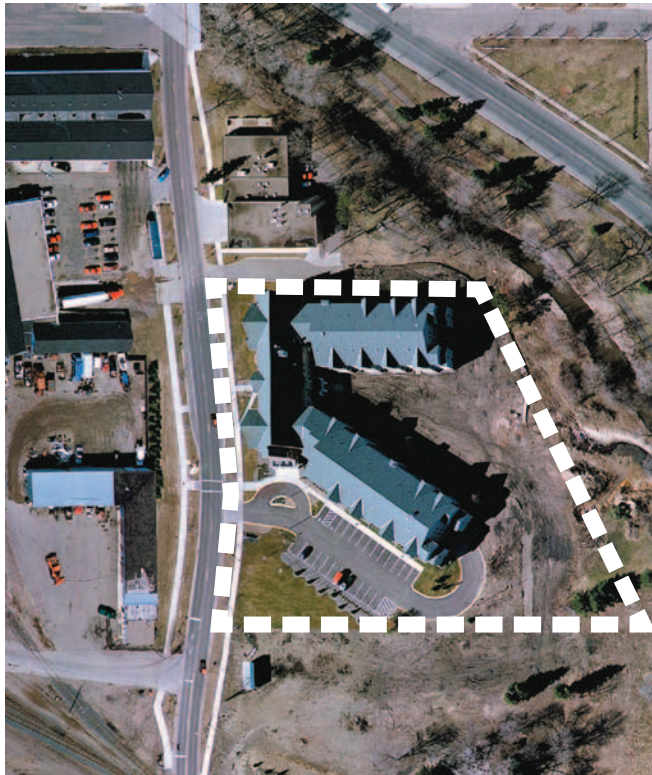


Parking is located behind the building, where affordable, durable vinyl siding takes the place of the brick that is on the more public face of the building. The rear arms of the U-shaped building extend out into a public open space, and offer views of and access to Shingle Creek. The view below is from the community room of Shingle Creek Commons.



An overflow pond behind the apartment building, prevents flooding, and drains into Shingle Creek during rain events.

Housing Density Shingle Creek Commons • 27 ^{units}/_{acre}



Block Area & Demographic Information

U.S. Census demographic information (2000) is not available for Shingle Creek Commons, which was completed after 2000. Housing units and block area were calculated manually.

block density 27 du/acre

number of housing units 75

block area 2.8 acres

type of units low-rise apartments

number of floors 3

distance from curb 15 feet

location Bounded by Humboldt, Girard and 46th Avenues North. Lind-Bohannon and Shingle Creek neighborhoods, Minneapolis.

Census Tract & Demographic Information

U.S. Census demographic information (2000) is not available for Shingle Creek Commons, which was completed after 2000.

context Mixed-income rental housing for seniors—including affordable units—built on a new greenway, created along Humboldt Avenue in north Minneapolis. The buildings are oriented toward views of Shingle Creek, to the east. Industrial buildings sit across the street to the west of Shingle Creek Commons; the surrounding neighborhood contains many small, post-WWII, Cape Cod-style houses.