



The Lourdes Square rowhouses are located near the St. Anthony Main and Riverplace commercial area, on the west bank of the Mississippi River, across from downtown Minneapolis.



The rowhouses have three different street relationships. Some units closely front the street; other units are set back approximately thirty feet from the street. The units pictured above front a raised pedestrian path. Porches provide private open space and, along with the landscaping, help make this an intimate neighborhood street.



Plazas, landscaping, and fountains throughout the St. Anthony Main and Riverplace commercial area serve as community open spaces for local residents, including the Lourdes Square rowhouses and nearby condominiums.



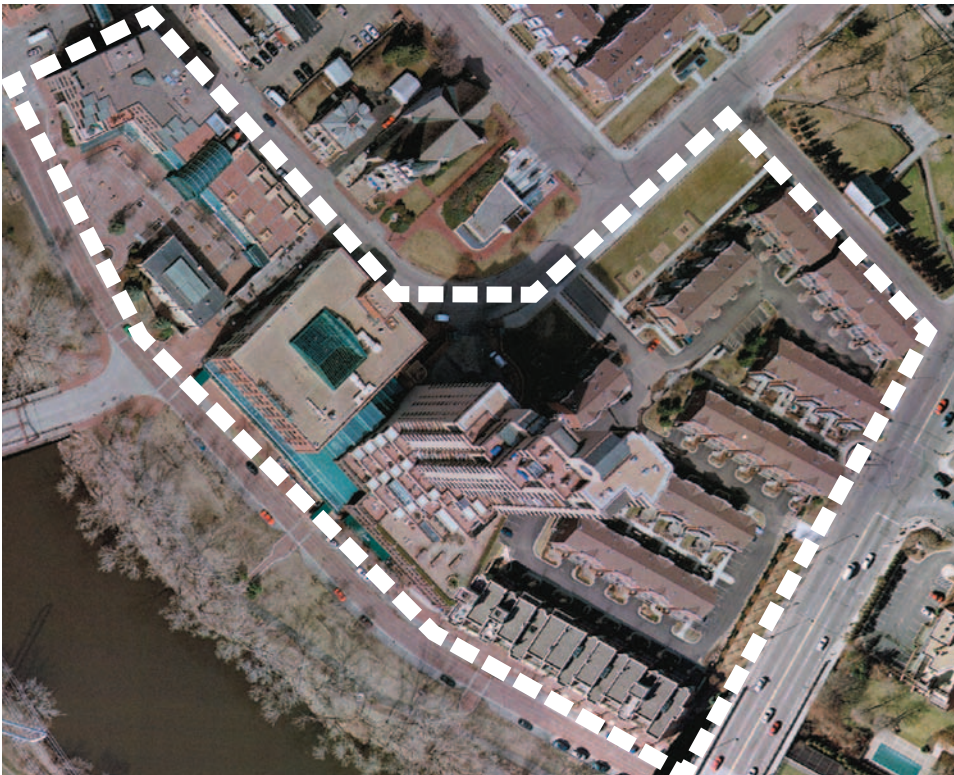
Tuck-under garages at the rear of the rowhouses provide off-street parking for residents. Shaded decks and landscaping humanize this paved area.



The three-story rowhouses sit comfortably within a neighborhood of high-rise condominiums and commercial office and retail activity.



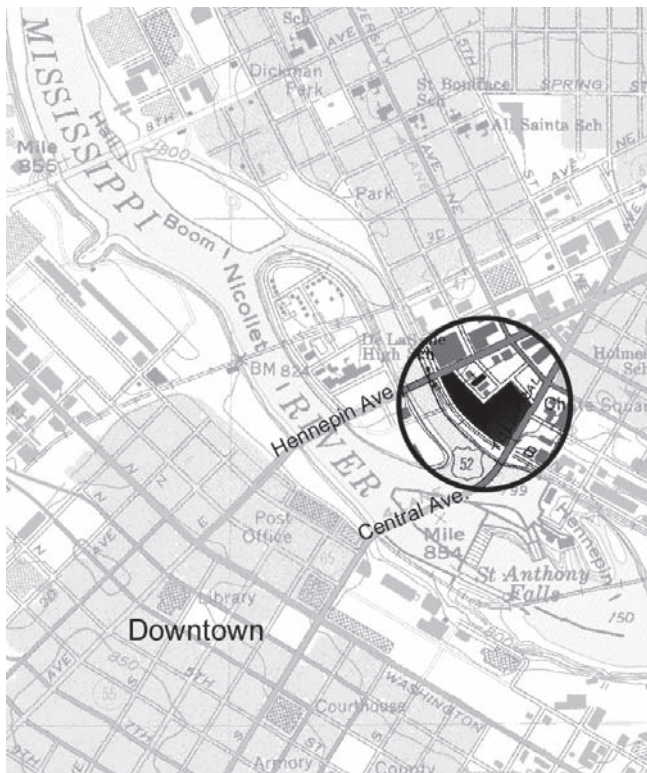
# Housing Density St. Anthony / Riverplace • 20 $\frac{\text{units}}{\text{acre}}$



## Block Area & Demographic Information

\* U.S. Census demographic information (2000) covers entire census block, indicated on photo at left

- block density** 20 du/acre
- number of dwelling units** 156 \*
- block area** 7.8 acres
- occupied housing units** 90% \*
- hsg. units owner-occupied** 97% \*
- average household size** 1.76 \*
- percent white** 92% \*
- median age** 56 \*
- types of units** townhomes, high-rise apartments
- number of floors** 2-27
- bldg. distance from curb** 12-87 ft



**location** Bounded by Central Avenue, Main Street, Hennepin Avenue, Lourdes Place, Bank Street, and University Avenue. Nicollet Island / East Bank neighborhood, Minneapolis.

## Census Tract & Demographic Information

\* U.S. Census demographic information (2000) covers entire census tract, which extends outside the boundaries of the map at left

- census tract density** 5 du/acre
- Census tract area on which density is calculated includes roads, open space, commercial, industrial, and other land uses, in addition to housing. Tract densities are almost always lower than block area densities.
- number of housing units** 1,044 \*
- census tract area** 223 acres
- median household income** \$46,181 \*
  - 121% of Minneapolis median household income
  - 85% of metropolitan median household income

**context** High-rise apartments and side-attached rowhouses sit among an historic, mixed-use and growing neighborhood of commercial and residential development on the west bank of the Mississippi River.

