



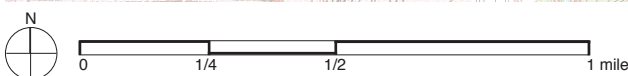
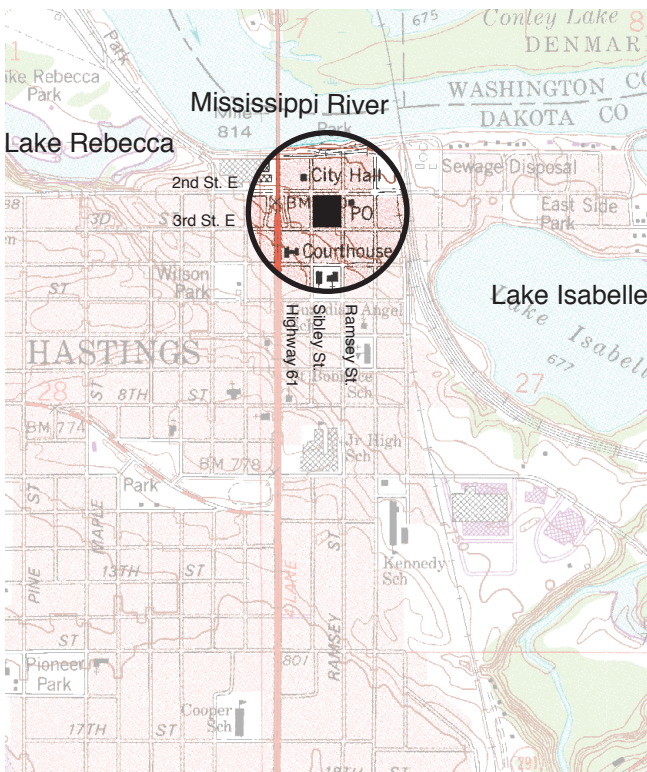
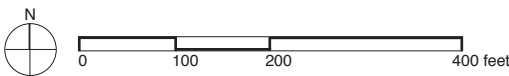
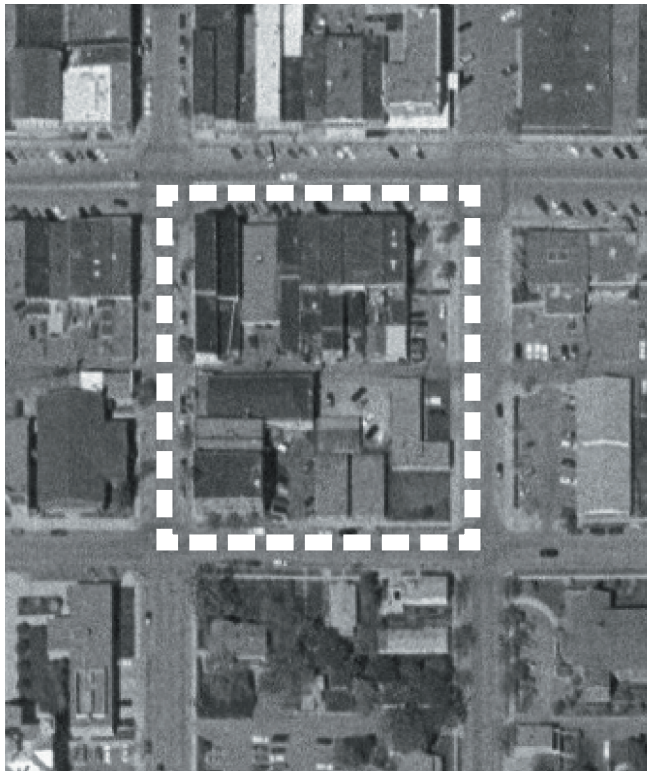
Hastings has maintained a vibrant downtown since it was established in the 1840s. 2nd Street (shown above) is characterized by mixed-use buildings with commercial space on the ground level and housing and offices on the upper levels, creating a vibrant street where people live, work, shop, and play.



Access to second and third floor apartments varies. In some cases entrance is from the side or back, while in others the entrance is located at the front of the building.



The small park (shown above) provides a pleasant gathering place for visitors, workers, and downtown residents to eat lunch, have a cup of coffee, or meet.



Block Area & Demographic Information

* U.S. Census demographic information (2000) for census block indicated on photo at left.

** Block area was calculated using a census block layer that was aligned to street centerlines by The Lawrence Group.

block density 15 dwelling units/acre

number of housing units 44 *

block area 2.9 acres **

occupied housing units 93.2% *

housing units owner-occupied 7.3% *

average household size 1.5 *

percent white 90.2% *

median age 28.1 *

types of units rowhouses, duplexes, and detached single-family homes

number of floors 1–3

location Bounded by Ramsey Street, Third Street East, Sibley Street, and Second Street East. Hastings is 35 miles southeast of the Twin Cities.

Census Tract & Demographic Information

*** The U.S. Census demographic information (2000) included here refers to the entire census tract, which extends beyond the boundaries of the map at left.

census tract density .3 dwelling units/acre

Census tract area on which density is calculated includes roads, open space, commercial, industrial, and other land uses in addition to housing. Tract densities are almost always lower than block area densities.

number of housing units 1,896 ***

census tract land area 6,176 acres ***

median household income \$45,539 ***

context This block is located in the heart of downtown Hastings, which is located on the Mississippi River. It is a picture-perfect example of a small town Main Street. Many historic buildings, with commercial uses on the first floor and housing above, line the downtown streets.