



The townhomes have features typical of single-family homes, including gable roofs and brick detailing. Entrances are found on both sides of the buildings.



All units share this play area for young children.



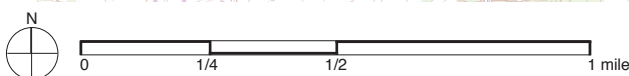
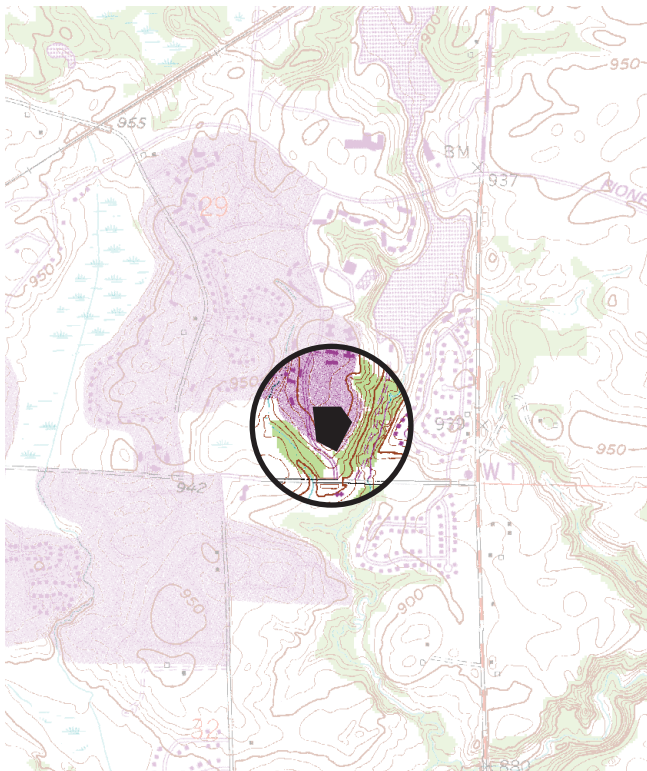
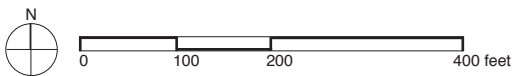
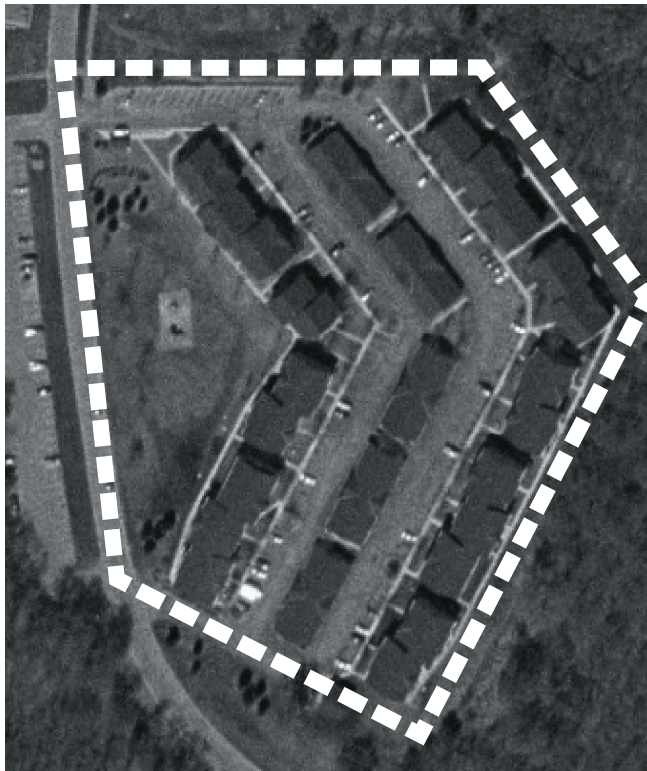
Sidewalks connect the townhomes. In this area, recycling containers are kept along a walk that allows pedestrians to pass between groups of garages.



Detached garages for all units are grouped together in the interior of the block.



While the exterior of each townhome unit looks very similar to its neighbor, individual treatments near the front doors create unique entries.



Block Area & Demographic Information

* U.S. Census demographic information (2000) for census block indicated on photo at left.

** Block area was calculated using a census block layer that was aligned to street centerlines by The Lawrence Group.

block density 9 dwelling units/acre

number of housing units 37 *

block area 4.0 acres **

occupied housing units 100% *

housing units owner-occupied 2.7% *

average household size 3.7 *

percent white 100% *

median age 34.5 *

types of units rowhouses, and senior housing units

number of floors 2

location Bounded by Woodcrest Drive and Village Road. Chaska is 27 miles southwest of the Twin Cities.

Census Tract & Demographic Information

*** The U.S. Census demographic information (2000) included here refers to the entire census tract, which extends beyond the boundaries of the map at left.

census tract density .7 dwelling units/acre

Census tract area on which density is calculated includes roads, open space, commercial, industrial, and other land uses in addition to housing. Tract densities are almost always lower than block area densities.

number of housing units 2,480 ***

census tract land area 3,563 acres ***

median household income \$65,517 ***

context Jonathan is a New Town development that was started in the late-1960s and later became part of Chaska. Homes in Jonathan are clustered, allowing for the preservation of open space. A system of trails connects the clusters of homes.