



Located four blocks from downtown Cannon Falls, the Stonehouse Apartments senior housing complex is an 1893 building that was formerly an elementary school. Financed through government-sponsored programs, residents must meet income guidelines.



The one-story Cannon Community Center is attached to Stonehouse Apartments.



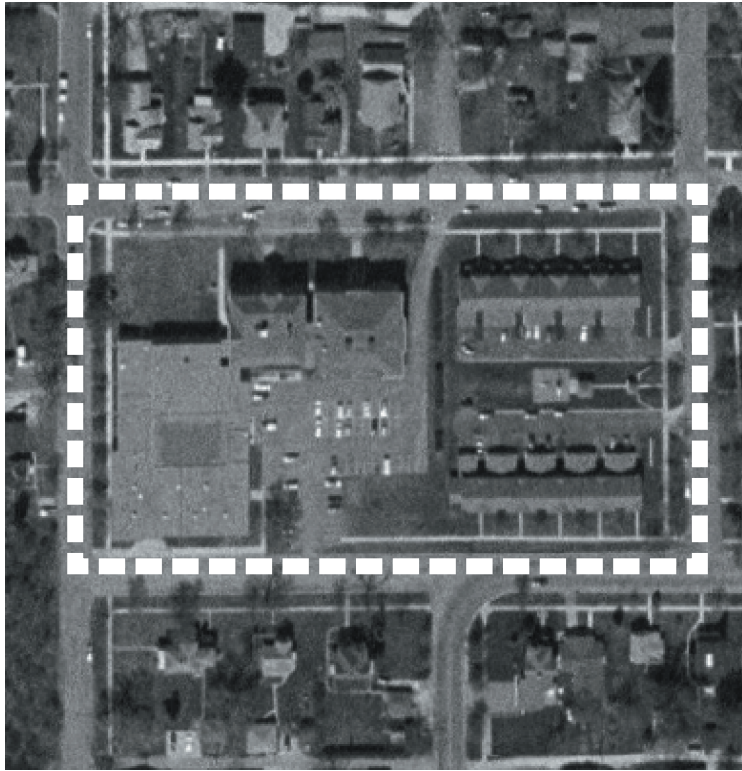
Bridge Run, located next to Stonehouse Apartments, consists of 18 three-bedroom rental townhomes financed by the Housing Tax Credit program. Residents must meet certain guidelines and regulations.



The Bridge Run townhomes are designed to resemble nearby detached homes. Traditional front porches facing the street and garages are attached at the rear.



A well-maintained play area is located behind Stonehouse and Bridge Run apartments. This location allows seniors to see the young children at play.

**Block Area & Demographic Information**

* U.S. Census demographic information (2000) for census block indicated on photo at left.

** Block area was calculated using a census block layer that was aligned to street centerlines by The Lawrence Group.

block density 9 dwelling units/acre

number of housing units 50*

block area 5.9 acres **

occupied housing units 94% *

housing units owner-occupied 0% *

average household size 2.0 *

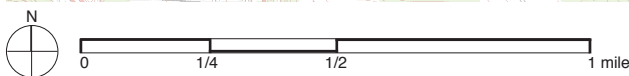
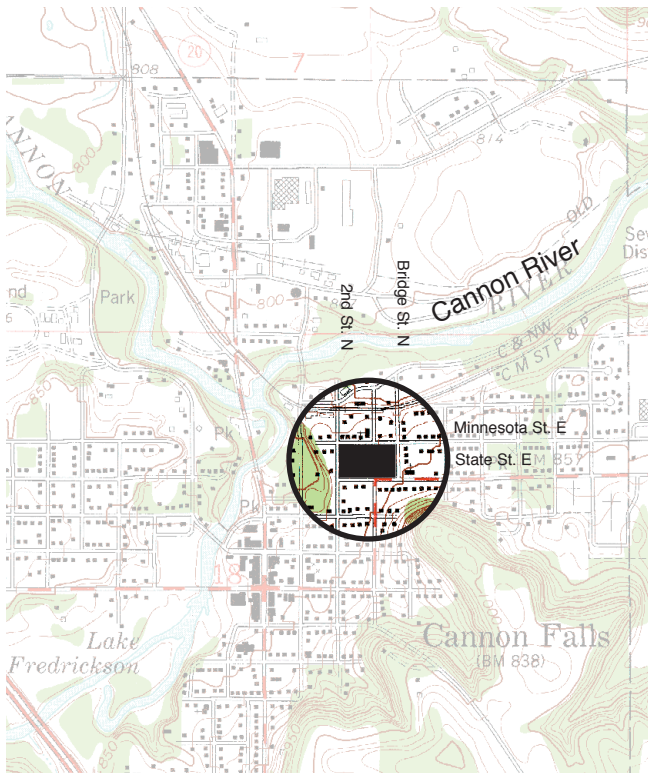
percent white 100% *

median age 36.7 *

types of units apartments

number of floors 2-3

location Bounded by Minnesota Street East, Bridge Street North, State Street West, and 2nd Street North. Cannon Falls is 47 miles southeast of the Twin Cities

**Census Tract & Demographic Information**

*** The U.S. Census demographic information (2000) included here refers to the entire census tract, which extends beyond the boundaries of the map at left.

census tract density .3 dwelling units/acre

Census tract area on which density is calculated includes roads, open space, commercial, industrial, and other land uses in addition to housing. Tract densities are almost always lower than block area densities.

number of housing units 1,866 ***

census tract land area 7,274 acres ***

median household income \$44,677 ***

context This block is located approximately 4 blocks from downtown Cannon Falls and 2 blocks from the Cannon River. 29 buildings in downtown Cannon Falls were listed on the National Register of Historic Places in 2000. Detached, single-family housing predominates in the surrounding neighborhoods.